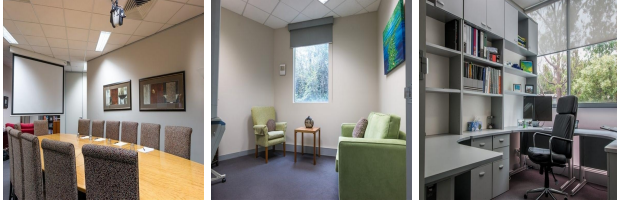


Suite 8, 1175 Toorak Road, Camberwell, Melbourne, Victoria, Australia

View this office online at:

<https://www.newofficeasia.com/details/serviced-offices-suite-8-1175-toorak-road-camberwell-melbourne-victoria>



Boasting a prestigious address, this comprehensive business centre is the ideal setting to project a good corporate image for your business while offering a collaborative and creative working environment to help your business grow. There are a variety of office solutions available which makes this facility well-equipped to support a wide range of businesses and the fully furnished suites offer state-of-the-art telephony, internet connection and communal kitchen facilities. With an open-plan boardroom, there is a unique space to host meetings, training sessions, market research and networking events in addition to the selection of executive meeting rooms also available. Currently home to designers, decorators, consultants, coaches, counselors, facilitators, trainers and photographers, this creative business centre can be shaped around your individual business requirements with both fixed and temporary leases being offered.

Transport links

- Nearest railway station: Burwood Train Station
- Nearest road:
- Nearest airport:

Key features

- Administrative support
- Board room
- Car parking spaces
- Carpets
- Caterer services available
- Central heating
- Close to railway station
- Company signage
- Conference rooms
- Flexible contracts
- High-speed internet
- Kitchen facilities
- Meeting rooms
- Modern interiors

- Postal facilities/mail handling
- Reception staff
- Secure car parking
- Security system
- Telephone answering service
- Town centre location
- Virtual office available
- WC (unisex)

Location

Situated on Toorak Road, this business centre resides within the heart of a charming retail strip which belongs to a predominately residential area. There is a selection of shops, cafes and a post office nearby, all of which are within easy walking distance and are well-served by tram services. Both Burwood and Hartwell railway stations are within close proximity and Toorak Road provides excellent access to the M1 and Melbourne which is complemented by the car parking spaces provided while Melbourne Airport can be reached within a half an hour drive via the M2.

Points of interest within 1000 metres

- SMG European Cars (car) - 226m from business centre
- Burwood (railway station) - 409m from business centre
- Cannon Toyota (car) - 419m from business centre
- Hartwell Primary School (school) - 454m from business centre
- Hartwell (railway station) - 525m from business centre
- Back Creek Reserve (park) - 537m from business centre
- Fordham Gardens (park) - 555m from business centre
- Back Creek Reserve (park) - 817m from business centre
- Lynden Park (park) - 969m from business centre

All information contained in this document is for guide purposes only and NewOfficeAsia.com.com cannot be held responsible for any inaccuracies or omissions. Please confirm all details with the agent representing this office space before proceeding. Full terms of service can be viewed at <http://www.NewOfficeAsia.com.com/terms-of-service>.