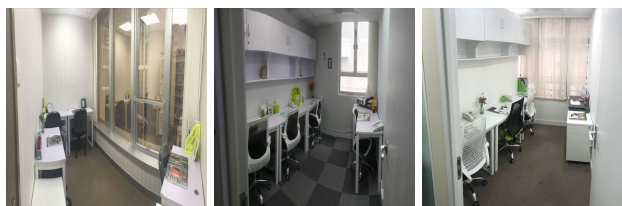


Ritz Plaza, 122 Austin Road, Kowloon, Hong Kong

View this office online at:

<https://www.newofficeasia.com/details/serviced-offices-ritz-plaza-122-austin-road-kowloon-hong-kong>



Delivering a comprehensive range of high-tech office equipment, this executive centre at Ritz Plaza may be the perfect place to start a search for work space in Hong Kong. Work space is practical and versatile, boasting complete furnishings and state-of-the-art technology that is complemented by the bespoke contract agreements that are on offer. Users of these premises further benefit from superbly equipped meeting rooms, which are provided if needed, in addition to relaxed lounge areas where you can socialise with colleagues and brainstorm ideas in comfort. Companies at this serviced office centre enjoy the provision of secure access via an elegant reception area, where all visitors are received and furnished with the assistance they require. So why not schedule a viewing of this executive centre whilst searching for offices and see for yourself the quality of decor and amenities that your company could be enjoying.

Transport links

- Nearest tube: Jordan
- Nearest airport: Jordan

Key features

- Air conditioning
- Beverages
- Close to railway station
- Comfortable lounge
- Dedicated Internet
- Furnished work spaces
- IT support available
- Kitchen facilities
- Manned reception
- Meeting rooms
- Security system
- Telecoms
- Town centre location
- Wifi
- Wireless networking

Location

Pinpointed at the intersection of Nathan Road and Austin Road, this hub is nestled in the town's central area, in close proximity to all the shops, coffee shops and transport routes that are synonymous with such a celebrated location. Staff members who value the opportunity to hit the shops during lunch-breaks can take advantage of the fact that the Lai Si Zung Sam mall is about 20 metres from this centre, as are a whole host of other leisure and relaxation venues. This business hub offers an assortment of dining options, the nearest of which is Jing Hin Gok Ciu Jyut Hoi Sin Zau Gu, just a quick stroll away and very popular with all that visit. For firms and individuals that need to make regular overseas trips, the airport is but 34 kilometres by road, a drive of about 25 minutes assuming regular traffic conditions. Jordan MTR station is situated just 100 metres from the door and there are excellent road links for drivers. With such great access to both public amenities and transit options, this serviced office hub can be classed as a popular option for organisations based in or considering a move to Hong Kong, and is an essential visit when weighing up which would be the best new work space for your company.

Points of interest within 1000 metres

- 錦興酒家, jing hin gok ciu jyut hoi sin zau gu (restaurant, seafood) - 17m from business centre
- 興泰龍日盆流菜, hung taai long jat bun liu lei (restaurant, japanese) - 17m from business centre
- 萊斯尊山, lai si zung sam (shopping center) - 18m from business centre
- 廣培文學校, ngaa zau pei man hok faat zin zung sam (school) - 18m from business centre
- 富都茶館, fu dou caa caan teng (restaurant, guangdong) - 18m from business centre
- 尊山, zeon saam lau (condominium complex) - 18m from business centre
- 聚, zyu gaa coi (restaurant, guangdong) - 19m from business centre
- Luxury, LUXURY (restaurant, french) - 25m from business centre
- 樓, lou ziu jyut naam caan teng (vietnamese, restaurant) - 26m from business centre
- 廣興, hoeng gong zo je jau haan gung si (manufacturing facility) - 27m from business centre
- 廣興(廣)興, sung joeng din gung hoeng gong jau haan gung si (manufacturing facility) - 27m from business centre
- 廣興, coeng joeng jau haan gung si (manufacturing facility) - 27m from business centre
- 廣興, jing gou gwok zai leoi wan jau haan gung si (travel agents) - 3m from business centre
- 廣興, zit taat leoi jau jau haan gung si (travel agents) - 3m from business centre
- 23, saan lam dou 23 hou (condominium complex) - 33m from business centre
- 廣興, naam waan caan teng (restaurant) - 33m from business centre
- 廣興, jam lok jan gu (western continental, restaurant) - 33m from business centre
- 廣興, gou lau waan hoi sin fo wo liu lei (restaurant,

seafood) - 34m from business centre

- I Centre 壹中心, I CENTRE gik gwong kiu si zung sam (doctor) - 36m from business centre
- 美姿美容, cim mei mei jung cim tai zung sam (beauty salon) - 36m from business centre
- 大匯, dai bou lau (condominium complex) - 36m from business centre
- 和, juk ngai (restaurant, sushi) - 37m from business centre
- 鹿鹿, luk luk gai bou fo wo (restaurant, hot pot) - 37m from business centre
- 匯豐, wai hong leoi hong se jau haan gung si (travel agents) - 45m from business centre
- 龍, gam fung taai caan teng (restaurant, chinese) - 45m from business centre
- 匯豐, hoeng gong bou fai jyu lok jau haan gung si (media facility) - 45m from business centre
- 匯豐, cong sing gwok zai zaap tyun jau haan gung si (food shops) - 45m from business centre
- 匯豐, fu taat muk jip jau haan gung si (furniture/home furnishings) - 45m from business centre
- 匯豐, CYUN KAU LEOI JAU MAU JI GUNG SI (hotel/motel, hostel) - 47m from business centre
- 匯豐, GWONG WAANG LEOI JAU BAN GUN (bed breakfast guest houses, hotel/motel) - 47m from business centre
- 匯豐, wang lyun hoeng gong jau haan gung si (restaurant) - 50m from business centre
- 匯豐, kut hok gaau sat jau haan gung si (school) - 52m from business centre
- 匯豐, ngau zi siu tai kam gong kam hok jyun (art school, school) - 52m from business centre
- 匯豐, KAM TIN LONG SUSHI RESTAURANT (restaurant, sushi) - 6m from business centre