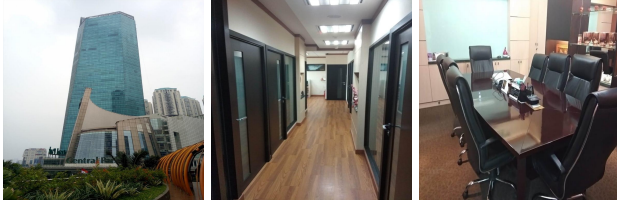


Jalan S Parman, Central Park, APL Tower, Jakarta Barat, Jakarta

View this office online at:

<https://www.newofficeasia.com/details/serviced-offices-jalan-s-parman-central-park-apl-tower-jakarta-barat>



With leases ranging between one month and a year, this flexible executive hub resides within a prestigious glass corporate tower with both VIP offices available or larger suites which can seat between 2 and 8 people. Tenants of this office hub can fully utilise the in-house food hall which serves an assortment of bites to eat and provides a top venue for breaks and downtime. There is also an on-site cash machine with banking services available for your convenience. Service users and visitors to the centre also enjoy allotted car parking spaces, helping to ease the problem of attempting to locate downtown parking spaces in this area of town. Book a viewing of these work spaces to commence your hunt for new offices and experience first-hand the high level of decor and amenities that your company could be enjoying.

Transport links

- Nearest airport:

Key features

- Access to multiple centres nation-wide
- Air conditioning
- Banking services
- Beverages
- Cash machine / ATM
- CCTV monitoring
- Furnished workspaces
- Meeting rooms
- Restaurant in the building
- Secure car parking

Location

These executive suites inhabit a much sought after location in Jakarta, that's surrounded by some of the city's best retailers and dining places and boasts convenient access to a variety of transit routes. Staff members who are partial to a little retail therapy whilst on breaks can take advantage of the fact that the central park mall is about 160m from their door, as are a good selection of other leisure and relaxation venues. It is also close to some great eating options - roughly 160m from the door is J. CO, which is a great place for winding down with some food when the work day is done. Soekarno-Hatta International Airport is no more than 22 kilometres from the door via the Jl. Tol Prof. Sedyatmo and Jl. Tol airport Prof. Sedyatmo which translates to about 29 minutes in the car if the roads are clear. Due to its

highly sought after position, this centre is an obvious contender for those on the lookout for world-class executive suites in Jakarta, and is an essential visit as part of your office search.

Points of interest within 1000 metres

- Apartemen Taman Anggrek (parking garage) - 100m from business centre
- Central Park (parking garage) - 119m from business centre
- S Parman Central Park (public transport stop, bus stop) - 126m from business centre
- Levi's Store - Taman Anggrek (factory outlet) - 132m from business centre
- Podomoro City (condominium complex) - 143m from business centre
- Central Park Mall (parking garage) - 149m from business centre
- Apartemen Taman Anggrek (condominium complex) - 158m from business centre
- Celebrity Fitness (sports center) - 161m from business centre
- BreadTalk (bakers) - 161m from business centre
- J.CO (restaurant, indonesian) - 161m from business centre
- Carrefour (supermarkets hypermarkets, market) - 161m from business centre
- Central Park Mall (shopping center) - 161m from business centre
- Center Watch (yacht basin, marina) - 174m from business centre
- New Look (shopping center) - 179m from business centre
- S B Furniture - Kalimalang (furniture/home furnishings) - 187m from business centre
- Cantika Salon (leisure center) - 193m from business centre
- Pizza E Birra - Central Park (restaurant, pizza) - 194m from business centre
- Pizza E Birra - Central Park (restaurant, pizza) - 194m from business centre
- Telkom Jakarta Barat (government office) - 202m from business centre
- BURGER KING (restaurant, fast food) - 205m from business centre
- Pempek Merdeka (restaurant, indonesian) - 205m from business centre
- Chicken Rice Palace (restaurant) - 207m from business centre
- SOGO Dept Store (department store) - 207m from business centre
- Alfamart Kemanggisan 5 (convenience stores) - 40m from business centre
- Bakerzin (restaurant, fast food) - 40m from business centre
- Levi's - Central Park (factory outlet) - 40m from business centre

- Tokio Kitchen Central Park (restaurant, japanese) - 48m from business centre
- Penang Bistro Central Park (restaurant, bistro) - 64m from business centre
- Alfamart Kosambi Kresek 2 (convenience stores) - 66m from business centre
- Alfamart Meruya Selatan 2 (convenience stores) - 82m from business centre

All information contained in this document is for guide purposes only and NewOfficeAsia.com cannot be held responsible for any inaccuracies or omissions. Please confirm all details with the agent representing this office space before proceeding. Full terms of service can be viewed at <http://www.NewOfficeAsia.com/terms-of-service>.