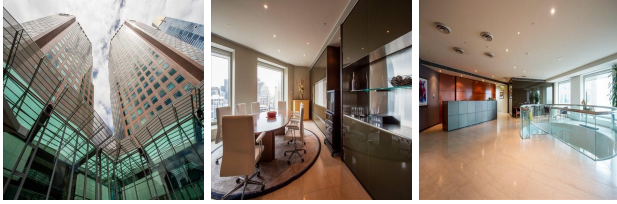


The HWT Tower (L23), 40 City Road, Melbourne

View this office online at:

<https://www.newofficeasia.com/details/serviced-offices-hwt-tower-40-city-road-melbourne>



The HWT Tower offers bright and spacious serviced offices which benefit from spectacular views across the district, Melbourne's CBD skyline and the Botanical gardens. This business centre provides a multitude of facilities to help your business thrive which includes advanced infrastructure and three elegant boardrooms which are perfect for entertaining up to 40 people. With dedicated staff at hand, your guests will be looked after, as will your phone calls and paperwork, allowing you to focus purely on running your business. Boasting banking services, kitchen facilities and fitness equipment, this business centre is well-equipped to cater to all of your professional and recreational requirements, keeping your team refreshed and motivated.

Transport links

- Nearest railway station: Flinders Street Station
- Nearest road:
- Nearest airport:

Key features

- 24 hour access
- 24-hour security
- Access to multiple centres nation-wide
- Access to multiple centres world-wide
- Administrative support
- AV equipment
- Board room
- Car parking spaces
- Carpets
- CCTV monitoring
- Close to railway station
- Comfortable lounge
- Company signage
- Conference rooms
- Conference rooms
- Fitness facilities
- Flexible contracts

- Furnished work spaces
- High speed internet
- High-speed internet
- Hot desking
- IT support available
- Kitchen facilities
- Lift
- Meeting rooms
- Modern interiors
- On-site management support
- Open plan workstations
- Part of business park
- Photocopying available
- Postal facilities/mail handling
- Reception staff
- Restaurant in the building
- Secure car parking
- Security system
- Shower cubicles
- Telephone answering service
- Town centre location
- Unbranded offices
- Video conference facilities
- Virtual office available
- Voicemail
- VOIP telephony
- WC (separate male & female)
- Wireless networking

Location

This business centre boasts a prestigious address which lies just south of the Yarra River and only 2 minutes from Melbourne's bustling central business district. Companies can enjoy a vibrant array of restaurants, bars and shops close by as well as numerous hotels and the Convention and Exhibition Centre which lies within easy walking distance. With the tram network and City Link just a stone's throw away, this business centre boasts excellent connectivity with the rest of Melbourne, including the airport which can be reached within a 20 minute drive.

Points of interest within 1000 metres

- Crown Entertainment Complex (attraction) - 320m from business centre
- Coopers Malthouse Theatre (theatre) - 555m from business centre
- Batman Park (park) - 572m from business centre
- VCAM University of Melbourne (university) - 573m from

business centre

- Enterprize Park (park) - 596m from business centre
- Sturt Street Reserve (park) - 612m from business centre
- Miles and Dodds Reserve (park) - 668m from business centre
- The Australian Ballet Centre (public building) - 668m from business centre
- Langham Hotel (hotel) - 681m from business centre
- Production (university) - 687m from business centre
- Immigration Museum (museum) - 699m from business centre
- VCAM University of Melbourne (university) - 700m from business centre
- Production (university) - 705m from business centre
- Grant Street Theatre (university) - 731m from business centre
- National Gallery of Victoria (NGV International) (public building) - 752m from business centre
- Film and Television (university) - 757m from business centre
- Federation Hall (university) - 790m from business centre
- Elisabeth Murdoch Building (university) - 803m from business centre
- Richard Pratt Gardens (garden) - 810m from business centre
- VCAM Reception (university) - 814m from business centre
- Melbourne Convention Centre Parking (parking) - 843m from business centre
- Hamer Hall (theatre) - 847m from business centre
- Victoria University (City Flinders Campus) (university) - 859m from business centre
- South Melbourne Market (mall) - 884m from business centre
- Tom's Block (park) - 940m from business centre
- South Melbourne Town Hall (townhall) - 975m from business centre
- Memorial Reserve (park) - 975m from business centre

All information contained in this document is for guide purposes only and NewOfficeAsia.com.com cannot be held responsible for any inaccuracies or omissions. Please confirm all details with the agent representing this office space before proceeding. Full terms of service can be viewed at <http://www.NewOfficeAsia.com.com/terms-of-service>.