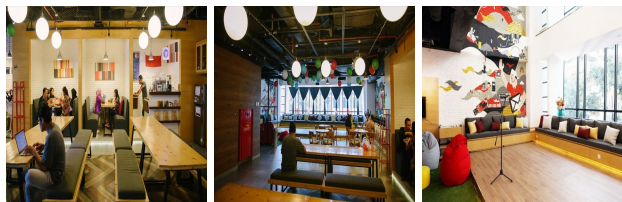


EV Hive D. Lab, Jalan Riau No.1, Menteng, RT.9/RW.5, Gondangdia, Jakarta

View this office online at:

<https://www.newofficeasia.com/details/serviced-offices-ev-hive-d-lab-jalan-riau-no-1-menteng-rt-9-rw-5-gondangdia>



If your organisation is in search of the very best office package in Jakarta, then this option at EV Hive D. Lab is a true contender. Choose from a range of dedicated desks and flexible work space solutions which have been thoughtfully designed to promote collaboration with other firms. Tenants of this centre can also take advantage of stylishly furnished conference and meeting rooms, which are available for booking upon request and come highly equipped with state-of-the-art videoconferencing technology. This serviced office centre is also able to offer regulated access by way of a staffed entrance area, where visitors are met with a smile and given the information they need. With all that it offers and with so few overheads, these offices are definitely worth exploring if you are in the market for a 'ready-to-go' workspace in Jakarta.

Transport links

- Nearest airport:

Key features

- 24-hour security
- Administrative support
- Air conditioning
- Beverages
- Board room
- Broadband Internet
- Car parking spaces
- CCTV monitoring
- Comfort Cooling system
- Comfortable lounge
- Conference rooms available
- Entry phone system
- Furnished work spaces
- IT support available
- Kitchen facilities
- Manned reception
- Meeting rooms

- Modern interiors
- Multilingual staff
- Office cleaning service
- On-site management support
- Photocopying available
- Secure car parking
- Security system
- Telecoms
- Telephone answering service
- Video conference facilities
- WC (separate male & female)
- Wifi
- Wireless networking

Location

These suites are based in a much sought after position in Jakarta, that's just a stone's throw from some of the city's best leisure venues and places to eat and renders easy access for multiple bus routes and other transit options. This area enjoys a good selection business friendly facilities that would make basing your company here much easier - for example the nearest post office, Kantorpos Wisma Kosgoro, which you can find 3 minutes from the door. These office suites provide handy access to an assortment of dining options, the nearest of which is Opal Coffee, no more than a 2 minute walk away and highly regarded by those in the know. For firms and individuals that tend to travel, Transjakarta Bus Station is situated just a few minutes from the door and the International Airport is no more than 31 km by road, a drive of about 32 minutes assuming regular traffic conditions. Mixing low overheads, nearby shopping outlets and a highly prized postcode in a single package, it would be hard to unearth a more suitable location for business in Jakarta.

Points of interest within 1000 metres

- Opal Coffee (restaurant) - 109m from business centre
- Apotik Sabang (pharmacy) - 124m from business centre
- Komplek Sekolah St Theresia (school) - 147m from business centre
- Rujak Center for Urban Studies (library) - 154m from business centre
- Kantorpos Wisma Kosgoro (post office) - 169m from business centre
- Rumah Makan Selero Jumbo (restaurant, indonesian) - 170m from business centre
- Look Inc (school) - 172m from business centre
- bank sinarmas (bank) - 175m from business centre
- bank sinarmas (bank) - 175m from business centre
- SD Sta Belarminus (school) - 175m from business centre
- Kedai Langkawi (restaurant) - 62m from business centre
- Dr Goei's Dental Center (dentist) - 69m from business centre
- Laurel Dental Care (dentist) - 69m from business centre
- Dr Goei's Dental Center (dentist) - 69m from business centre

- Natrabu (restaurant) - 95m from business centre

All information contained in this document is for guide purposes only and NewOfficeAsia.com.com cannot be held responsible for any inaccuracies or omissions. Please confirm all details with the agent representing this office space before proceeding. Full terms of service can be viewed at <http://www.NewOfficeAsia.com.com/terms-of-service>.