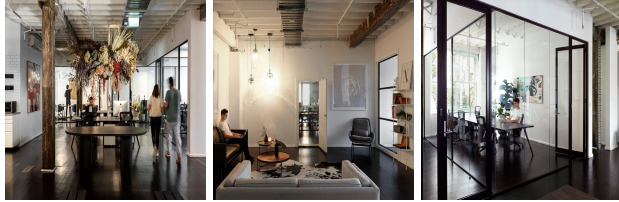


# 85 William St, Darlinghurst, NSW, Sydney, New South Wales

View this office online at:

<https://www.newofficeasia.com/details/serviced-offices-85-william-st-darlinghurst-nsw-sydney-new-south-wales>



Striking the perfect balance between a co-working office hub and incubator environment, this productive business centre has been thoughtfully designed to innovate, inspire and impress. The facility adopts essential skills such as responsibility and intelligent design to enhance problem solving and improve productivity. Service users here can push productivity to the limit thanks to the all hours access policy, which guarantees use of work areas is possible at all times and on all days. These executive suites are delivered with flexible lease agreements so the individual needs of every occupant are fulfilled without any unnecessary overheads. Other amenities made available by this provider include tailor-made contracts, boardroom access, fully furnished interiors and meeting rooms.

## Transport links

- Nearest tube: Kings Cross
- Nearest airport: Kings Cross

## Key features

- 24 hour access
- Air conditioning
- AV equipment
- Beverages
- Board room
- Cat 6 networking or higher
- CCTV monitoring
- Close to railway station
- Comfortable lounge
- Company signage
- Flexible contracts
- Flexible contracts
- Furnished workspaces
- High-speed internet (dedicated)
- IT support available
- Kitchen facilities
- Meeting rooms

- Office cleaning service
- Open plan workstations
- Photocopying available
- Recycling facilities
- Security system
- Shower cubicles
- Telecoms
- Town centre location
- Virtual office available
- Virtual office available
- Wifi
- Wireless networking

## Location

Strategically positioned on the edge of Darlinghurst and Woolloomooloo, this business centre boasts close proximity to a wide range of corporate and leisure amenities, not to mention cultural venues and fantastic transport links. For employees that intend to get the most out of their breaks, showcase gallery is merely a 1 minute stroll from the door and both the Australian Museum and Australian design centre lie within easy walking distance. The centre has a range of eating options within easy walk - no more than 20 metres from this centre can be found Love Tilly Devine, a popular location for winding down with some food after a productive day in the office. This part of Sydney is quickly accessed from Sydney Airport, which is no more than 10 km away and is reachable in 20 minutes via O'Riordan St. With its mix of low overheads, nearby dining options and a top business address in one attractive package, you'd struggle to come up with a more attractive prospective home for business in or around Sydney.

## Points of interest within 1000 metres

- Sixt Rent A Car (rent-a-car facility) - 12m from business centre
- Love Tilly Devine (restaurant) - 23m from business centre
- Jory&r (supermarkets hypermarkets, market) - 28m from business centre
- Love, Tilly Devine (restaurant, australian) - 29m from business centre
- Mas Temple (doctor) - 29m from business centre
- Strand Hotel (hotel/motel, hotel) - 34m from business centre
- Showcase Gallery (museum) - 35m from business centre
- The Owl House (restaurant) - 37m from business centre
- Chemcert (school) - 37m from business centre
- Club (food shops) - 38m from business centre
- Red Lily Cocktail Bar (asian (other), restaurant) - 39m from business centre
- Intrinsic Brilliance (fitness club center, sports center) - 40m from business centre
- The Colonial Darlinghurst (restaurant) - 41m from business centre
- La Brasserie (restaurant, french) - 41m from business centre
- Bus Stop - William St near Crown St (public transport stop, bus

- stop) - 41m from business centre
- Conny Dietzschold Gallery (museum) - 42m from business centre
- Thai Princess (restaurant, fast food) - 43m from business centre
- Tomatoz Mexican Cantina (restaurant, mexican) - 44m from business centre
- East Sydney Community Based High School (high school, school) - 45m from business centre
- School Of Visual Arts (college/university) - 50m from business centre
- Fair Work Australia Sydney (courthouse) - 50m from business centre
- Red Lantern on Riley (asian (other), restaurant) - 50m from business centre
- Spigolo (restaurant, italian) - 50m from business centre
- Bendigo Bank Crown Internet Convenience (food shops) - 52m from business centre
- Wh Smith Australia (food shops) - 55m from business centre
- Blacks Anatomy (fitness club center, sports center) - 59m from business centre
- Becomeprimal (beauty salon) - 65m from business centre
- Megt Sydney (beauty salon) - 68m from business centre
- Travel On Q (travel agents) - 69m from business centre
- Tsbh Fo Right (hotel/motel) - 70m from business centre
- Budget - Sydney City - Kings Cross (rent-a-car facility) - 70m from business centre
- AIR Library (library) - 70m from business centre
- Advanced Medical Centre (doctor) - 70m from business centre
- Thrifty - Sydney / Darlinghurst (rent-a-car facility) - 70m from business centre
- Dalkara Park (repair facility) - 71m from business centre
- Alissa Frances Gargano (doctor) - 71m from business centre
- La Mint (vietnamese, restaurant) - 73m from business centre
- City Gym (fitness club center, sports center) - 74m from business centre
- Secure Parking (parking garage) - 76m from business centre
- Phillip Gallo Hair (hairdressers barbers) - 77m from business centre
- Meiyu Shang (hairdressers barbers) - 77m from business centre