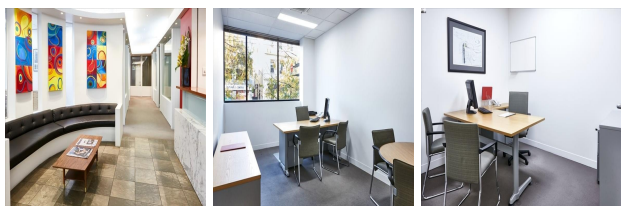


68-72 York Street, Melbourne, Australia

View this office online at:

<https://www.newofficeasia.com/details/serviced-offices-68-72-york-street-melbourne-au>



Designed by a leading architect, this business centre is finished to the highest standard to provide contemporary office accommodation which will enhance productivity. Offices are bright and spacious, offering high speed internet, immaculate decor and round the clock access which is augmented by the cost-effective prices. With a manned reception, your guests, calls and paperwork will be taken care of, allowing you the time and energy to entertain business opportunities in style with the executive meeting rooms.

Transport links

- Nearest tube: Spencer St
- Nearest road: Spencer St
- Nearest airport: Spencer St

Key features

- 24 hour access
- Administrative support
- AV equipment
- Car parking spaces
- Close to railway station
- Conference rooms
- Conference rooms
- High speed internet
- High-speed internet
- IT support available
- Meeting rooms
- Modern interiors
- Near to subway / underground station
- Reception staff
- Security system
- Shower cubicles
- Telephone answering service
- Town centre location

Location

Located in South Melbourne, this business centre resides within a convenient part of the city which is within minutes of the bustling central business district. There is an array of cafes, bars, restaurants and shops close by as well as hotels and Reading Cinemas, all of which are augmented by the lush greenery decorating the street. With a tram stop placed just a stone's throw away, commuters have easy access to the rest of the city while the nearby M1 provides excellent links for drivers, complemented by parking facilities, with Melbourne Airport being reached within a 20 minute drive.

Points of interest within 1000 metres

- South Melbourne Market (mall) - 387m from business centre
- South Melbourne Town Hall (townhall) - 402m from business centre
- Sturt Street Reserve (park) - 442m from business centre
- Park-Eastern Reserve (park) - 595m from business centre
- Park-Eastern Reserve (park) - 660m from business centre
- Miles and Dodds Reserve (park) - 674m from business centre
- Ludwig Stamer Reserve (park) - 770m from business centre
- Sol Green Reserve (park) - 782m from business centre
- Crown Entertainment Complex (attraction) - 824m from business centre
- Anzac Gardens (garden) - 851m from business centre
- VCAM University of Melbourne (university) - 891m from business centre
- Victoria Barracks (barracks) - 934m from business centre
- Crowne Plaza (hotel) - 962m from business centre
- Albert Park Bowling Club (pitch) - 984m from business centre
- Production (university) - 987m from business centre
- Production (university) - 999m from business centre

All information contained in this document is for guide purposes only and NewOfficeAsia.com cannot be held responsible for any inaccuracies or omissions. Please confirm all details with the agent representing this office space before proceeding. Full terms of service can be viewed at <http://www.NewOfficeAsia.com/terms-of-service>.