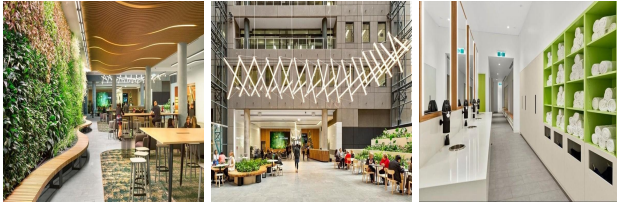


# 485 La Trobe Street, Melbourne, Victoria

View this office online at:

<https://www.newofficeasia.com/details/serviced-offices-485-la-trobe-street-melbourne-victoria>



Recently opened in September, this is a business hub in a position to cater for a wide range of corporate requirements by offering both private and shared suites which are enhanced by flexible terms. Tenants of this centre are also granted access to stylishly furnished meeting and conference areas, which are made available when required and there are training rooms with seating up to 32 people. Users of this serviced office centre enjoy access to a network of hubs around the globe that have a shared access arrangement - this makes it a great prospect for business travellers in need of a desk and internet connection whilst abroad. Tenants are entitled to use of copy machines, an executive lounge and kitchen facilities, making for a centre able to accommodate a whole host of business types.

## Transport links

- Nearest railway station: Flagstaff
- Nearest airport:

## Key features

- 24 hour access
- 24-hour security
- Access to multiple centres nation-wide
- Access to multiple centres world-wide
- Administrative support
- Air conditioning
- AV equipment
- Beverages
- Bike racks
- Board room
- Car parking spaces
- Carpets
- CCTV monitoring
- Close to railway station
- Comfortable lounge
- Conference rooms
- Flexible contracts
- Flexible contracts

- Furnished workspaces
- Hot desking
- Kitchen facilities
- Meeting rooms
- Modern interiors
- Near to a subway/underground station
- Office cleaning service
- On-site management support
- Open plan workstations
- Photocopying available
- Postal facilities/mail handling
- Reception staff
- Secure car parking
- Shower cubicles
- Telephone answering service
- Town centre location
- Training rooms available
- WC (separate male & female)
- Wifi
- Wireless networking

## Location

Stationed opposite the magnificent Flagstaff Gardens, this business centre is to be found in an easily reached location that is brimming with handy amenities and transport links. A leisurely stroll from the centre are a great range of restaurants - just 100 metres away you will find Zarrin, a lovely place for relaxing and eating after a hard day's work. The desirable Docklands precinct is just a 15 minute stroll from the door and you will be spoilt for choice when it comes to overnight accommodation for your guests. This part of the city is easily accessed from Melbourne Airport, which is just 22 kilometres away and can be driven to in only 18 minutes using the M2. Combining budget friendly costs, transport convenience and a prestigious postcode, you would struggle to come up with a more suitable prospective home for business in the Melbourne area.

## Points of interest within 1000 metres

- Golfzoncity (amusement arcade, amusement park) - 101m from business centre
- Zarrin (restaurant, fast food) - 101m from business centre
- Picone Hair (hairdressers barbers) - 105m from business centre
- Frescatis Cafe (café/pub, café) - 23m from business centre
- F G J A (restaurant) - 26m from business centre
- AIFS Library (library) - 26m from business centre
- Melbourne Library (library) - 26m from business centre
- Slater (library) - 26m from business centre
- Little Lonsdale Newsagency (newsagents tobacconists) - 26m from business centre
- Angad Australian Institute Of Technology (school) - 45m from business centre

business centre

- Wilson Parking - 485 La Trobe St (parking garage) - 47m from business centre
- Federal Court of Australia Victoria Registry (courthouse) - 48m from business centre
- Uniku Sushi (restaurant, sushi) - 50m from business centre
- Jeaus (restaurant) - 59m from business centre
- Consulate of Belgium (embassy) - 61m from business centre
- Societe Air France (travel agents) - 61m from business centre
- Carrick Melbourne Campus (college/university) - 61m from business centre
- Max Therapy Holdings (college/university) - 61m from business centre
- C li Cafe Bar Restaurant (café/pub, café) - 63m from business centre
- Melb Intl College (supermarkets hypermarkets, market) - 63m from business centre
- Cafe Sonex (café/pub, café) - 65m from business centre
- S K Club (restaurant) - 66m from business centre
- Gionik (restaurant, fast food) - 70m from business centre
- Moon Gear Studio (beauty salon) - 76m from business centre
- Che-Sed Beauty (beauty salon) - 76m from business centre
- King Street (public transport stop, tram stop) - 78m from business centre
- Investment Banking Institute Business School (college/university) - 79m from business centre
- My Tooth Fairy (dentist) - 79m from business centre
- 535 Little Lonsdale Street Flagstaff Car Park (electric vehicle station) - 88m from business centre
- Bus Stop - Flagstaff Railway Station (public transport stop, bus stop) - 90m from business centre
- Stylize- Professional Haircut And Colour (hairdressers barbers) - 95m from business centre
- Hand Of Midas (car wash) - 95m from business centre
- Sbriga Espresso Bar (restaurant, fast food) - 95m from business centre