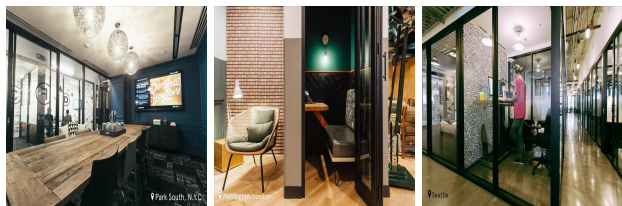


383 George Street, Sydney, New South Wales

View this office online at:

<https://www.newofficeasia.com/details/serviced-offices-383-george-street-sydney-new-south-wales>



If you require a high standard office package in Sydney, then this executive office provider is certainly worth exploring. Due to open soon, this stylish facility renders 6 floors of tastefully furnished co-working and private office space that benefit from inclusive rates and flexible contracts. This centre has 24/7 access, meaning tenants can utilise the facilities at all hours of the day and night. This office hub is also provisioned with state-of-the-art meeting areas and an impressive boardroom, perfect for staff consultations, workshops and collaborations. For less formal discussions, there are comfortable breakout areas that is enhanced by the micro-roasted coffee bar and fresh fruit water on offer here. With this fine array of provisions and services at each resident's disposal, this office centre is equipped to provide just what's needed for all sorts of business to grow and evolve in Sydney.

Transport links

- Nearest tube: Martin Place
- Nearest airport: Martin Place

Key features

- 24 hour access
- Air conditioning
- Beverages
- Bike racks
- Board room
- Comfortable lounge
- Conference rooms
- IT support available
- Meeting rooms
- Office cleaning service
- Photocopying available
- Reception staff
- Shower cubicles
- Telecoms
- Wifi
- Wireless networking

Location

These office suites are situated in a much sought after location in Sydney, that is a short hop from some fantastic shops and dining places and enjoys easy access to many transit routes. In the case of tenants that frequently need to put up visitors, this centre has you covered. There is a good selection of local lodgings, by far the handiest is the Heritage Ballroom Westin Hotel, walkable from the centre in approximately 1 minute. This centre is close to lots of eating options, the nearest of which is Athenian, little more than a few steps away and very popular with those that work in this area. Sydney Airport is roughly 9 km drive from the centre and is approached using the Elizabeth St and O'Riordan St in 23 minutes. Mixing great value, nearby dining options and prestige in a 'ready-to-go' package, it would be difficult to find a more desirable prospective home for business in Sydney.

Points of interest within 1000 metres

- Secure Parking (open parking area) - 15m from business centre
- Cap (doctor) - 19m from business centre
- Nepean And Macquarie Urology Centres (doctor) - 30m from business centre
- C T Partners (travel agents) - 30m from business centre
- Lindsay Braid (doctor) - 31m from business centre
- Vodafone (mobile phone shop) - 34m from business centre
- Top Education Institute (school) - 34m from business centre
- Shazia Ali (car wash) - 34m from business centre
- Heritage Ballroom Westin Hotel (hotel/motel, hotel) - 37m from business centre
- Art Equity (antique/art) - 40m from business centre
- Paspaley (winery) - 48m from business centre
- Egencia Australia (travel agents) - 5m from business centre
- Voyage Affaires (travel agents) - 5m from business centre
- Benchmark Medical (general practitioner, doctor) - 52m from business centre
- Athenian (restaurant, greek) - 57m from business centre
- Crystal Web Inv (computer supplies) - 60m from business centre
- The Lobby Cafe (café/pub, café) - 64m from business centre