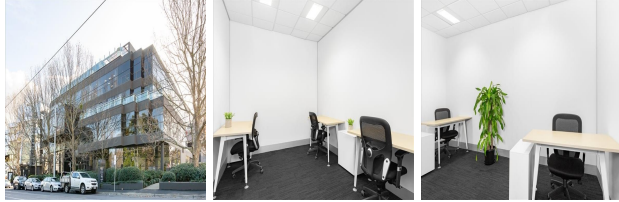


# Ground Floor, 35 Cotham Road, Kew, Melbourne, Victoria, Australia

View this office online at:

<https://www.newofficeasia.com/details/serviced-offices-35-cotham-road-kew-melbourne-victoria>



Situated on the ground floor, this modern business centre radiates sophistication and provides a practical working environment designed to enhance your business. Offices are fully furnished and bathed in natural light, boasting ergonomic furniture, elegant decor and high speed internet which can be accessed round the clock for your convenience. Stylish meeting rooms are also available which offer the ideal setting for entertaining business opportunities while the friendly receptionist welcomes your guests in a warm and professional manner to project a good corporate image for your company.

## Transport links

- Nearest railway station: Glenferrie Train Station
- Nearest road:
- Nearest airport:

## Key features

- 24 hour access
- Administrative support
- Board room
- Car parking spaces
- Central heating
- Conference rooms
- Disabled facilities (DDA/ADA compliant)
- Furnished workspaces
- High-speed internet
- IT support available
- Kitchen facilities
- Lift
- Meeting rooms
- Office cleaning service
- Reception staff
- Secure car parking

- Shower cubicles
- Virtual office available
- WC (separate male & female)
- Wireless networking

## Location

Located in the heart of Kew, this business centre enjoys a strategic location with easy access to the eastern suburbs and the bustling central business district. There are a range of shops, restaurants, cafes and hotels nearby, offering an energetic and vibrant atmosphere which is complemented by the tram stops and road links that keep your business connected. Drivers benefit from excellent parking facilities and Melbourne Airport can be reached within a half an hour drive via the M2.

## Points of interest within 1000 metres

- Trinity Grammar School (school) - 216m from business centre
- Fenton Reserve (park) - 218m from business centre
- Woolworths (supermarket) - 251m from business centre
- Trinity Grammar School (school) - 264m from business centre
- Tim's Bookshop (books) - 310m from business centre
- Lucky Star Variety Store (gift) - 314m from business centre
- Bivio's Pizza Bistro (restaurant) - 319m from business centre
- Kew Primary School (school) - 321m from business centre
- De Meli's International Hairdressing (hairdresser) - 327m from business centre
- Strathfield (hifi) - 331m from business centre
- Leo's Fine Food & Wine (supermarket) - 339m from business centre
- Raoul Wallenberg Garden (garden) - 340m from business centre
- Trinity Grammar School (school) - 346m from business centre
- Cresco Reserve (park) - 390m from business centre
- Dorothy Rogers Reserve (park) - 461m from business centre
- Trinity Grammar School (school) - 467m from business centre
- St Paul's College (school) - 560m from business centre
- Xavier College (school) - 581m from business centre
- Kew Recreation Centre (sports centre) - 628m from business centre
- Ruyton Girls' School (school) - 765m from business centre
- Alexandra Gardens (park) - 81m from business centre
- St Vincent's Private Hospital Kew (hospital) - 830m from business centre
- Methodist Ladies College (school) - 852m from business centre
- Foley Reserve (park) - 889m from business centre
- Eglinton Reserve (park) - 947m from business centre

All information contained in this document is for guide purposes only and NewOfficeAsia.com.com cannot be held responsible for any inaccuracies or omissions. Please confirm all details with the agent representing this office space before proceeding. Full terms of service can be viewed at <http://www.NewOfficeAsia.com.com/terms-of-service>.