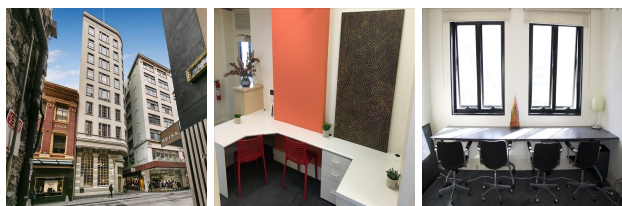


# 306 Little Collins Street, Melbourne, Victoria

View this office online at:

<https://www.newofficeasia.com/details/serviced-offices-306-little-collins-street-melbourne-victoria>



If you are on the hunt for a fully equipped and ready to go office provision in or around Melbourne, then this co-working solution at Little Collins Street is certainly worth exploring. Upon arrival, all guests are welcomed by the highly professional reception team, whose job it is to ensure they are directed towards their destination or given any other help they need. The business hub also provides its tenants with thoughtfully designed conference and meeting rooms plus a fantastic balcony and comfortable lounge area, all of which is complemented by an unlimited supply of fresh ground coffee. With all that it offers and with such flexible terms, this centre is worth investigating for companies on the lookout for a 'ready-to-go' workspace in Melbourne.

## Transport links

- Nearest railway station: Flinders Street
- Nearest airport:

## Key features

- Air conditioning
- Comfortable lounge
- Flexible contracts
- Flexible contracts
- Hot desking
- Kitchen facilities
- Lift
- Meeting rooms
- Reception staff
- Telecoms
- Town centre location
- Wifi
- Wireless networking

## Location

Sited at 306 Little Collins Street, this serviced office centre is an option worth investigating for those who are keen to find a balance between a world-class office space solution and justifiable rates. You and your team will be perfectly placed next to Bourke Mall and enjoy walking distance to a comprehensive array of amenities and public transport options. These office suites provide handy access to an array of food options, such as Chuckle Park Bar and Cafe and

Laurent Bakery which are a mere stone's throw from the door and present the ideal setting to enjoy your lunch hour. Melbourne Airport finds itself approximately 21 km door to door on the M2 or around 21 minutes on the road at off-peak times. For more domestic commuters, both Parliament Street Station and Flinders Street Station reside nearby and render tram and mainline rail services. With its blend of very reasonable rental rates, multiple transit options and a sought after postcode in a single package, you would struggle to come up with a more advantageous location to do business in Melbourne.

### **Points of interest within 1000 metres**

- Alteration Experts (tailor shop) - 13m from business centre
- Gourmet Curry Hut (restaurant, indian) - 18m from business centre
- Kostagin Management (bakers) - 18m from business centre
- Thien Hon Huynh (beauty salon) - 18m from business centre
- David Raymond Simmons (beauty salon) - 18m from business centre
- New Guernica (nightlife, bar) - 18m from business centre
- Vyp Investments (grocers) - 22m from business centre
- Chemist Warehouse (pharmacy) - 22m from business centre
- Caffè E Torta (café/pub, café) - 22m from business centre
- Printing Ticket (hairdressers barbers) - 24m from business centre
- Thaiger (restaurant, fast food) - 26m from business centre
- Gordon's Cafe & Bar (café/pub, café) - 27m from business centre
- 7-Eleven Melbourne (convenience stores) - 32m from business centre
- Westpac - Melbourne CBD Branch (bank) - 33m from business centre
- Travel Money Oz (travel agents) - 33m from business centre
- Venus Beauty & Health (beauty salon) - 33m from business centre
- Cse Investment Holdings (travel agents) - 33m from business centre
- City Medical Clinic (doctor) - 33m from business centre
- My Chemist (pharmacy) - 34m from business centre
- Aromatic Espresso (restaurant) - 35m from business centre
- Phone smart Melbourne (food shops) - 35m from business centre
- Food Cube (hotel/motel) - 35m from business centre
- Education Zone Australia (mobile phone shop) - 35m from business centre
- Market Organics (food shops) - 35m from business centre
- Marketing Acumen (school) - 35m from business centre
- Vodafone (mobile phone shop) - 35m from business centre
- The Hair Institute (hairdressers barbers) - 35m from business centre

- Sichuan Diningroom (restaurant, sichuan) - 35m from business centre
- Restaurant & Catering Assoc Of Victoria (restaurant, fast food) - 35m from business centre
- Pharmacy Neo Goldsbrough Lane (pharmacy) - 35m from business centre
- Muffin Break (café/pub, café) - 35m from business centre
- Hanks Orthodontics (dentist) - 35m from business centre
- Bourke House (hairdressers barbers) - 35m from business centre
- Collins St Services (dentist) - 35m from business centre

All information contained in this document is for guide purposes only and NewOfficeAsia.com.com cannot be held responsible for any inaccuracies or omissions. Please confirm all details with the agent representing this office space before proceeding. Full terms of service can be viewed at <http://www.NewOfficeAsia.com.com/terms-of-service>.