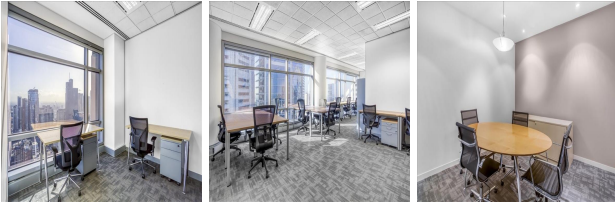


# 120 Collins Street, Level 50, Melbourne, Australia

View this office online at:

<https://www.newofficeasia.com/details/serviced-offices-120-collins-streetlevel-50-melbourne-au>



Dominating Melbourne's skyline, this business centre resides on the 50th floor and offers spectacular views of the surrounding district which is sure to impress and inspire. Offices are fully furnished offering high speed internet, ergonomic furniture and full use of the spacious meeting rooms which can be accessed day and night. With an on-site cybercafé, you can relax and refresh while the dedicated receptionist takes care of your guests, calls and paperwork, allowing you to focus purely on running your business.

## Transport links

- Nearest tube: Trams 1, 3, 5, 6, 8, 16, 22, 64, 67, 72, 86, 96, 112, 31, 42
- Nearest railway station: Flinders Street
- Nearest road: Trams 1, 3, 5, 6, 8, 16, 22, 64, 67, 72, 86, 96, 112, 31, 42
- Nearest airport: Trams 1, 3, 5, 6, 8, 16, 22, 64, 67, 72, 86, 96, 112, 31, 42

## Key features

- 24 hour access
- Access to multiple centres nation-wide
- Access to multiple centres world-wide
- Administrative support
- AV equipment
- Car parking spaces
- Close to railway station
- Conference rooms
- Conference rooms
- High speed internet
- High-speed internet
- IT support available
- Meeting rooms
- Modern interiors
- Reception staff

- Security system
- Shower cubicles
- Telephone answering service
- Town centre location
- Video conference facilities

## Location

Collins Street provides a prestigious and highly desirable location for your business, right in the heart of the legal and financial districts of Melbourne. State Parliament House and Gardens lie close by as well as established corporations including PricewaterhouseCoopers, ANZ Bank and BHP while a dynamic array of restaurants, shops and hotels are just a stone's throw away. With bus routes, tram lines and railway stations situated within easy walking distance, commuters benefit from excellent connectivity while drivers can enjoy a 20 minute drive to Melbourne Airport and a 25 minute journey to Tullamarine International Airport.

## Points of interest within 1000 metres

- Athenaeum Theatre (theatre) - 247m from business centre
- Hotel Sofitel (hotel) - 249m from business centre
- Melbourne Town Hall (townhall) - 299m from business centre
- City Square (common) - 306m from business centre
- Saint Paul's Cathedral (place of worship) - 335m from business centre
- ACMI (cinema) - 349m from business centre
- Stop 10 (traffic signals) - 395m from business centre
- Melbourne Visitor Centre (information) - 409m from business centre
- ABBA World (museum) - 428m from business centre
- Stop 9 (railway tram stop) - 431m from business centre
- Transport Hotel (pub) - 470m from business centre
- Parliament House (public building) - 492m from business centre
- Treasury Gardens (park) - 494m from business centre
- Stop 9 (traffic signals) - 564m from business centre
- Hamer Hall (theatre) - 662m from business centre
- Alexandra Gardens (park) - 741m from business centre
- #15 (pitch) - 748m from business centre
- Stop 8 (traffic signals) - 761m from business centre
- Building 22 (university) - 765m from business centre
- #14 (pitch) - 775m from business centre
- Langham Hotel (hotel) - 778m from business centre
- #13 (pitch) - 797m from business centre
- Building 4 (university) - 797m from business centre
- #11 (pitch) - 820m from business centre
- Alumni Courtyard (park) - 821m from business centre
- #12 (pitch) - 823m from business centre

- building 36 (university) - 825m from business centre
- Building 6 (university) - 828m from business centre
- building 38 (university) - 845m from business centre
- #10 (pitch) - 845m from business centre
- #8 (pitch) - 850m from business centre
- building 86 (university) - 853m from business centre
- Queen Victoria Gardens (park) - 859m from business centre
- building 37 (university) - 871m from business centre
- #9 (pitch) - 875m from business centre
- #7 (pitch) - 879m from business centre
- The Australian Ballet Centre (public building) - 884m from business centre
- building 10 (university) - 900m from business centre
- #6 (pitch) - 903m from business centre
- Casey Plaza Theatre (university) - 904m from business centre
- #5 (pitch) - 908m from business centre
- National Gallery of Victoria (NGV International) (public building) - 926m from business centre
- building 12 (university) - 936m from business centre
- St Vincent's Hospital (hospital) - 947m from business centre
- building14 (university) - 960m from business centre
- Building 96 (university) - 972m from business centre
- building 87 (university) - 982m from business centre
- Fitzroy Gardens (park) - 992m from business centre
- Immigration Museum (museum) - 993m from business centre
- Building 50 (university) - 994m from business centre
- RMIT University (university) - 999m from business centre

All information contained in this document is for guide purposes only and NewOfficeAsia.com.com cannot be held responsible for any inaccuracies or omissions. Please confirm all details with the agent representing this office space before proceeding. Full terms of service can be viewed at <http://www.NewOfficeAsia.com.com/terms-of-service>.