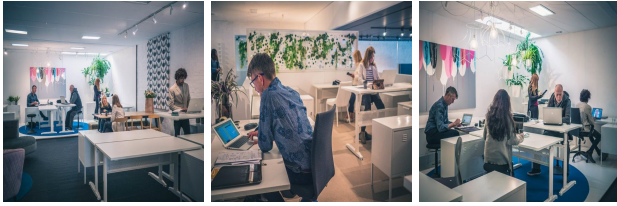


1-3 Inkerman Street, St Kilda, Melbourne, Victoria

View this office online at:

<https://www.newofficeasia.com/details/serviced-offices-1-3-inkerman-street-st-kilda-melbourne-victoria>



Tenants of 1-3 Inkerman Street can be provided with either traditional or co-working office suites, all with a good variety of business amenities - a world-class option for companies looking for somewhere to grow and evolve. Co-working memberships start from as little as 3 days a week for \$300, delivering productive work space that can suit a variety of budgets. New arrivals at the centre are received by the friendly lobby staff, whose job it is to ensure they are provided with help in finding their destination without delay and that you are notified of their arrival. Companies based at this centre benefit from state-of-the-art video conferencing facilities, enabling a method of connecting with colleagues that comes into its own for when an on-site conference cannot be achieved. Thanks to the comprehensive array of amenities available to occupants plus the creative and flexible setting, this facility is equipped to offer up the ingredients for a modern firm to get the best possible start in Melbourne.

Transport links

- Nearest airport:

Key features

- Air conditioning
- Beverages
- Board room
- Carpets
- Conference rooms available
- Furnished work spaces
- Kitchen facilities
- Manned reception
- Meeting rooms
- Office cleaning service
- Open plan workstations
- Photocopying available
- Postal facilities/mail handling
- Video conference facilities
- Wifi
- Wireless networking

Location

This complex sits in a highly regarded area of Melbourne, within walking distance of various places to eat and drink, where employees can recharge their batteries after work. This district of Melbourne boasts a great mix of food outlets and sleeping options, for example, the Newmarket Hotel, located only 100m from the centre or about a 2 minute stroll. For organisations and staff that need to make regular international trips, the airport is but 30 kilometres by road, a journey of roughly 26 minutes depending on traffic conditions. With such a convenient position, this serviced office hub is an enticing office option for firms in Melbourne, and should not be ignored whilst on your quest for a new office.

Points of interest within 1000 metres

- Surround Interiors (furniture/home furnishings) - 1m from business centre
- Red Rider Vintage (retail outlet) - 101m from business centre
- Newmarket Hotel - St Kilda (restaurant, barbecue) - 102m from business centre
- Newmarket Hotel (hotel/motel, hotel) - 102m from business centre
- Love & Dysfunction (nightlife) - 105m from business centre
- Graze on Grey (restaurant, australian) - 105m from business centre
- The Bitch Is Back (furniture/home furnishings) - 11m from business centre
- G.F Milton & J.R Milton (furniture/home furnishings) - 11m from business centre
- Ridewiser (fitness club center, sports center) - 110m from business centre
- Sweet Paris (restaurant, fast food) - 119m from business centre
- Rubins Auto Service Atf Rubins Auto Service Trust No 1 (repair facility) - 138m from business centre
- Anti Aging St Kilda (hairdressers barbers) - 14m from business centre
- Barkly Backpackers (hotel/motel) - 19m from business centre
- Michelle Lee Piroska (beauty salon) - 28m from business centre
- Machi (restaurant, japanese) - 30m from business centre
- Derby Thai (restaurant, thai) - 34m from business centre
- Earth Nut (restaurant) - 36m from business centre
- Mr Wolf (restaurant) - 41m from business centre
- St Kilda Beach House @ Hotel Barkly (hotel/motel, hotel) - 42m from business centre
- St Kilda Backpacker Holiday Melbourne (hotel/motel) - 42m from business centre
- Dragon's Door (restaurant) - 42m from business centre
- Cheap Az Travel (travel agents) - 45m from business centre
- St Kilda Express (food shops) - 50m from business centre
- Bus Stop - Fawkner St/Barkly St (public transport stop, bus stop) - 52m from business centre

- Mamm Tours And Travel (travel agents) - 59m from business centre
- Todd Bond Salon (beauty salon) - 61m from business centre
- Bus Stop - Inkerman St/Barkly St (public transport stop, bus stop) - 64m from business centre
- Li Shi Group (beauty salon) - 65m from business centre
- Olive Garden Cafe Bar And Grill (café/pub, café) - 66m from business centre
- Woodfrog Bakery (bakers) - 67m from business centre
- Live At Ease Reflexology (doctor) - 73m from business centre
- Junyao (food shops) - 78m from business centre
- Tina Spy (hairdressers barbers) - 8m from business centre
- Kristian Brown (hairdressers barbers) - 8m from business centre
- Inkr7 (restaurant, bistro) - 8m from business centre
- Kwan's Table (restaurant, fast food) - 8m from business centre

All information contained in this document is for guide purposes only and NewOfficeAsia.com.com cannot be held responsible for any inaccuracies or omissions. Please confirm all details with the agent representing this office space before proceeding. Full terms of service can be viewed at <http://www.NewOfficeAsia.com.com/terms-of-service>.