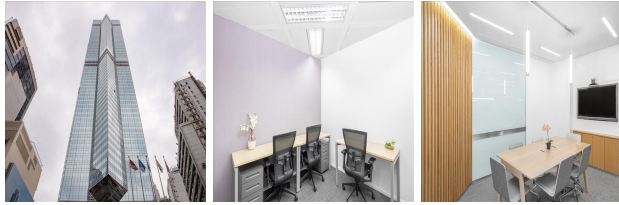


The Center (66F), 99 Queens Road, Central, Hong Kong

View this office online at:

<https://www.newofficeasia.com/details/serviced-66-f-the-center-hong-kong>



As one of the most important areas for financial and banking institutions, this address is near to many governmental and financial headquarters.

The neon lights of this stunning 73-storey building change hue every few seconds as they ascend. Most of the offices and meeting rooms provide breathtaking views of both the harbour and the city.

Besides offering all the services an up-and-coming company might require, this space also provides on-site parking - one of the most important factors for tenants that commute by car to this part of the city.

Workspace access is available 24 hours a day, seven days a week. Also included is raised access floors, a restaurant on the premises, and a video conference platform - increasingly crucial in light of recent events.

Transport links

- Nearest railway station: 香港(中環)站 (32 metres)
- Nearest airport:

Key features

- 24 hour access
- Administrative support
- Air conditioned
- Car parking spaces
- CCTV monitoring
- Centrally heated
- Comfortable lounge
- Convenient for transport hubs
- Drink making facilities
- Fixed rates
- Flexible contracts
- Furnished work spaces
- High-speed internet (dedicated)
- High-speed internet (shared)
- Inclusive of services

- Individual workspaces
- IT and Telecoms infrastructure
- IT support available
- Meeting rooms
- Multilingual staff
- Office cleaning service
- On-site management support
- Open plan workstations
- Raised floors
- Ready to go
- Reception staff
- Restaurant in the building
- Shared Workspace
- Town centre location
- Video conference facilities
- WC
- Wi-fi access

Location

In Hong Kong central business district, this office hub is surrounded by many major financial and banking headquarters.

Based in one of Hong Kong's tallest skyscrapers in its central business district, this is a truly prestigious and convenient location. With a well-connected system of public transport, you can make the most of your commute from this location.

Hong Kong International Airport is around 38 kilometres from the office centre by car and is accessible by way of Route 8 in 37 minutes.

The location of this space is convenient to both public amenities and transport routes, making it a desirable office space for companies in Hong Kong.

Points of interest within 1000 metres

- Vietnam Fast Food (restaurant, fast food) - 13m from business centre
- Trois (coffee shop, café/pub) - 14m from business centre
- Yuen's Tailor (tailor shop) - 15m from business centre
- 素食坊 (vegetarian, restaurant) - 21m from business centre
- DBS Bank Hong Kong Centre (bank) - 22m from business centre
- Wilson Communications (mobile phone shop) - 22m from business centre
- Pacific Coffee The Center (coffee shop, café/pub) - 25m from business centre
- The Centre Car Park (parking garage) - 26m from business centre
- Vietnam Fast Food (restaurant, fast food) - 26m from business centre

centre

- Pacific Coffee (coffee shop, café/pub) - 27m from business centre
- The Center (shopping center) - 28m from business centre
- Subway Queen's Road Central (restaurant, sandwich) - 29m from business centre
- 4 Tit Hong Lane (condominium complex) - 30m from business centre
- Ling Kee Book Store (office equipment) - 31m from business centre
- Mayfair Coffee (café/pub, café) - 31m from business centre
- Centre of Wellness-Hong Kong Sheng Kung Hui Welfare Council (general practitioner, doctor) - 32m from business centre
- Pret A Manger (restaurant, english) - 32m from business centre
- 香港旅行社 (travel agents) - 32m from business centre
- 美容中心 (beauty salon) - 32m from business centre
- 媒體中心 (media facility) - 32m from business centre
- 職業培訓中心 (vocational training, school) - 32m from business centre
- 製造廠 (manufacturing facility) - 32m from business centre
- Grenada Consulate (embassy) - 32m from business centre
- 製造廠 (manufacturing facility) - 32m from business centre
- 製造廠 (manufacturing facility) - 32m from business centre
- SUBWAY (restaurant, sandwich) - 32m from business centre
- HKYWCA Tai Hon Fan Nursery School (school) - 32m from business centre
- 2 Tit Hong Lane (condominium complex) - 34m from business centre
- 3 Shop (mobile phone shop) - 37m from business centre
- SmarTone (mobile phone shop) - 38m from business centre
- Fook Luk Sau Vegetarian Restaurant (vegetarian, restaurant) - 38m from business centre
- Affinity Kitchen (café/pub, café) - 38m from business centre
- Raymond's Second Hand Rolexes (antique/art) - 39m from business centre
- Golden China Restaurant (restaurant, chinese) - 40m from business centre
- KFC (restaurant, fast food) - 40m from business centre