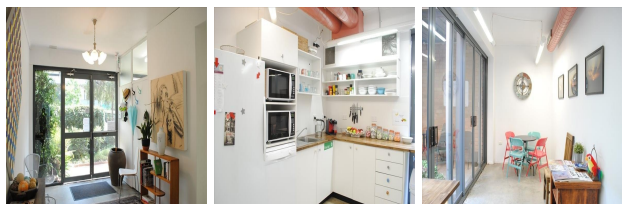


23 Atchison Street, St. Leonards, Sydney

View this office online at:

<https://www.newofficeasia.com/details/serviced-23-atchison-st-sydney>



Founded in 2001, this coworking space offers modern artwork and professional services that can be tailored to meet all needs.

Concrete and timber floors give this space its brightness and energy, whilst natural light floods in from all directions. The centre is ideal for contemporary, evolving businesses seeking an open-plan environment with individual workstations.

There is no way for a business centre to predict exactly what the future will bring, which makes flexibility one of its most attractive features. Flexible contracts are integral to the trading environment offered by this office hub, which keeps occupants in control and productivity-oriented.

Transport links

- Nearest railway station: North Sydney IT (30 metres)
- Nearest airport:

Key features

- 24 hour access
- Air conditioned
- Bicycle storage
- Car parking spaces
- CCTV monitoring
- Centrally heated
- Comfortable lounge
- Conference roomss
- Convenient for transport hubs
- Custom signage
- Drink making facilities
- Fixed rates
- Flexible contracts
- Furnished work spaces
- High-speed internet (dedicated)
- High-speed internet (shared)
- Inclusive of services

- Individual workspaces
- IT and Telecoms infrastructure
- IT support available
- Kitchen facilities
- Mail handling service
- Meeting rooms
- Office cleaning service
- On-site management support
- Open plan workstations
- Printing and copying equipment
- Ready to go
- Recycling points
- Shared Workspace
- Shower cubicles
- Telephone answering service
- Town centre location
- WC
- Wi-fi access

Location

A short stroll from the business centre you will find a variety of vibrant places to get refreshments and for staff to unwind whilst on lunch breaks.

Direction Fitness club just 60 metres from the centre, making it the perfect place for them to enjoy a spot of exercise after a long day's work! This location provides convenient access to lots of dining options, a good example of which is the Orchid Cafe, which is reachable on foot in little more than 1 minute and a real hit with local business people.

Trains run directly to the centre, and St. Mark's is just 4 minutes away on foot.

With an unbeatable location, this office provider is a good choice for those looking to lease top-quality office space in Sydney.

Points of interest within 1000 metres

- Eckersley's (office equipment) - 21m from business centre
- North Sydney IT (manufacturing facility) - 26m from business centre
- North Sydney IT (vocational training, school) - 30m from business centre
- Tanilba Bay Medical Centre (doctor) - 30m from business centre
- St Leonards Specialist Clinic (hairdressers barbers) - 31m from business centre
- Hospitality Information Systems (restaurant) - 35m from business centre
- Com-Tax Services (beauty salon) - 35m from business centre
- Clairderm Cosmetic Clinic (doctor) - 35m from business centre

- Sanbrook Mark Dr (doctor) - 40m from business centre
- Coffee Pot on Atchison (restaurant) - 41m from business centre
- Bakedown Cakery (bakers) - 46m from business centre
- Kevin J. Curtin (library) - 47m from business centre
- Rejuvenate Salon & Spa (beauty salon) - 54m from business centre
- Rejuvenate Day Spa (solarium massage, leisure center) - 54m from business centre
- The Orchid Cafe (restaurant) - 58m from business centre
- Peter Mabey Car Care (repair facility) - 62m from business centre
- Direction Fitness (fitness club center, sports center) - 62m from business centre
- Cache Nsw (computer supplies) - 62m from business centre
- Blue Dot Travel (travel agents) - 67m from business centre
- Oneworld Charters (nightlife) - 68m from business centre
- Wattleland (travel agents) - 70m from business centre
- Ccm Trading (restaurant, fast food) - 70m from business centre
- Flyware (office equipment) - 71m from business centre
- Jazz Workshop Australia (art school, school) - 77m from business centre
- Anzhncs Research Foundation (bank) - 79m from business centre
- Australian Institute Of Fitness (fitness club center, sports center) - 79m from business centre
- Australasian Cardiovascular Nursing College (college/university) - 79m from business centre

All information contained in this document is for guide purposes only and NewOfficeAsia.com.com cannot be held responsible for any inaccuracies or omissions. Please confirm all details with the agent representing this office space before proceeding. Full terms of service can be viewed at <http://www.NewOfficeAsia.com.com/terms-of-service>.